



VERMONT HOLOCAUST MEMORIAL
HONORING LIVES LOST & STORIES OF SURVIVAL

...and you shall tell your children

A Garden for Learning and Monument for Remembering

*How do we remember?
How do we understand?
How may we never forget?*

[The Holocaust](#) was unprecedented genocide perpetrated by Nazi Germany and its collaborators between 1933 and 1945. Children were especially vulnerable. Some were targeted on racial and religious grounds, or the simple reason that they were born Jewish. Others were targeted due to their physical or emotional disabilities. And still others because their families were involved in resistance.

In the end – 1.5 million children lost their lives in World War II's Holocaust. Humanity cannot allow this to happen again.

The [VERMONT HOLOCAUST MEMORIAL](#) (VTHM) is seeking inspiration for a Monument to the children of the Holocaust.

Vermont Holocaust Memorial:

Recent disturbing [research](#) confirms that distorted perceptions of the Holocaust – as well as increasing worldwide ignorance of its causes and tragic consequences – demand vigorous educational responses. VTHM is the state's only organization dedicated to facilitating Holocaust education as a means of preserving the memory of that genocide by using those lessons to combat bigotry, bullying, and racism of all kinds. Its founders are children of Holocaust survivors to whom this history is personal, and who believe it is crucial to make these invaluable lessons accessible to all.

Remembering 1.5 million children:

The inspiration for this monument comes from VTHM's '[Leaf Project](#)'. In Vermont, trees dominate and populate our landscape. There are no two trees alike. There are no two leaves alike. Likewise, there are no two people alike. Each tree may stand alone but together they connect and create a forest. As do families, which become part of a greater community.

Like the leaves, every young life lost during the Holocaust was unique. Someone's son or daughter, sister or brother, or grandchild. None of those who perished were given the opportunity to grow to their full adult potential. Imagine the doctors, teachers, politicians, or engineers. Any one might have discovered a cure for cancer or orchestrated worldwide peace, had they been granted the gift of long life.

The Garden for Learning and Monument for Remembering:

This will be Vermont's Holocaust Monument: a call to action to help recognize the consequences of prejudice, discrimination, and stereotyping – all of which played a pivotal role in the horrors of the Holocaust. This monument is intended to facilitate presentations and workshops to educate teachers, students, and the public about the invaluable lessons to be learned from that horrific event.

VTHM is seeking your assistance in envisioning this Learning Garden and Monument to the 1.5 million children who perished. By submitting your design ideas and concepts, you will be integrally connected to this cause. It is VTHM's intention to find a meaningful design solution for this essential undertaking.

The site of the project is proposed to be on the northwest end of the Jewish Community of Greater Stowe's (JCOGS) property, adjacent to Cape Cod Road in Stowe, VT. The site forms a natural bowl. It is approximately 400 sq. ft. (see appendix 2), with 3 feet of elevation change from its highest point to its lowest. Your design may not impact the property beyond the boundary indicated in appendix 2, but you may indicate a path from the existing sidewalks leading to the Garden and Monument.

Visitors to the Site:

While the project is to be planned on the JCOGS property, this is intended to be a space that is open to everyone and a destination for groups in the region wishing to learn more about the Holocaust.

The site must meet ADA design standards for accessibility. It should consider when one or two people may be present, or a busload of (40+) visitors. Most visitors are expected to arrive by foot or bicycle either from the parking lot to the east, the Stowe Recreation Path, or from the sidewalk along Cod Road.

The venue will not be staffed on a regular basis. Most groups or individuals visiting will be expected to navigate on their own.

Some groups may make prior arrangements for a VTHM docent or will come with a teacher who will use the monument and space to educate. Consider how someone in these roles might be interacting with the monument while speaking to a group.

Material and Climate:

This garden and monument should be of this place, rooted in Vermont. Your design should be responsive to the climate and location. Maintenance and durability must be considered.

Memory:

All of Europe's Jews were marked for extermination. This monument to the 1.5 million children who perished must challenge visitors to ask tough questions about the Holocaust, such as:

*Why did so many people turn on classmates, friends, neighbors?
Why were so many susceptible to Nazi ideology?
Why did some people take great risks to help a fellow human being?
And why do some deny the Holocaust today?*

This monument is to connect this historic catastrophe to present day. Its intention is to revisit and learn those all-important lessons to prevent other genocides from happening again. In a world in which antisemitism and Holocaust denial continue to erode the truth of the past, this will serve as a warning that:

To forget, or pretend it never happened, is to give victory to those who committed those atrocities of the Holocaust and other genocides.

Resilience:

Despite the tragedy of loss remembered here, there were children who survived. One of the goals of this tribute is to evoke not only the loss, but to honor the strength and resilience of those who managed to survive. Some were hidden. Some were forced to take on new identities. Others were dispatched on [Kindertransports](#). These too are a powerful element to the story.

Education:

The Holocaust must not be forgotten. Through remembering not just what transpired, but the circumstances and forces that allowed it, we can play a role in preventing such atrocities from repeating. That there have been other more recent genocides – such as Darfur, Rwanda, and Bosnia – speaks to the necessity and urgency of honoring, remembering, and educating.

Help us find our vision:

Art and design programs across the state are being asked to help us visualize a design for this project. If you are participating in this initial design exploration VTHM is requesting submissions include the following components:

- Site plan – no smaller than 1/8" scale
- (2) two scaled elevation drawings of the monument – no smaller than 1/2" scale
- (2) two or more 3D views of the project – either axonometric or perspective illustrations
- (Optional): 3D models of the project, presented in physical model form or images included with other drawings.

Note: All proposals to be submitted in PDF format.
A link to a student submission portal to be provided upon request.

VTHM's Monument Committee members are available for questions and will meet with students while they present their design responses to the call.

**Current deadline for design submissions:
Wednesday, December 15, 2021
For questions and submission link, contact us at:
info@holocaustmemorial-vt.org**

As the late Holocaust survivor Roman Kent once pleaded:
"Do not let our past be our children's future!"

Resources:

[VTHM List of Resources](#)

[VTHM Leaf Project background](#)

[VTHM Leaf Project suggested links and lesson plans](#)

[VTHM List of Holocaust Museums and Institutions](#)

[US Holocaust Memorial Museum](#)

[Yad Vashem: The World Holocaust Remembrance Center](#)

[Echoes and Reflections – Teaching the Holocaust. Inspiring the Classroom.](#)

[Echoes and Reflections: Teaching the Holocaust in Today's World](#) - video

[Teaching Guide to The Children of Willesden Lane](#)

[USC Shoah Foundation - iWitness Program](#)

[iWitness: Testimony of child survivors](#) - videos

[Child survivor, Robert Wagemann](#), on medical treatment of disabled children - video

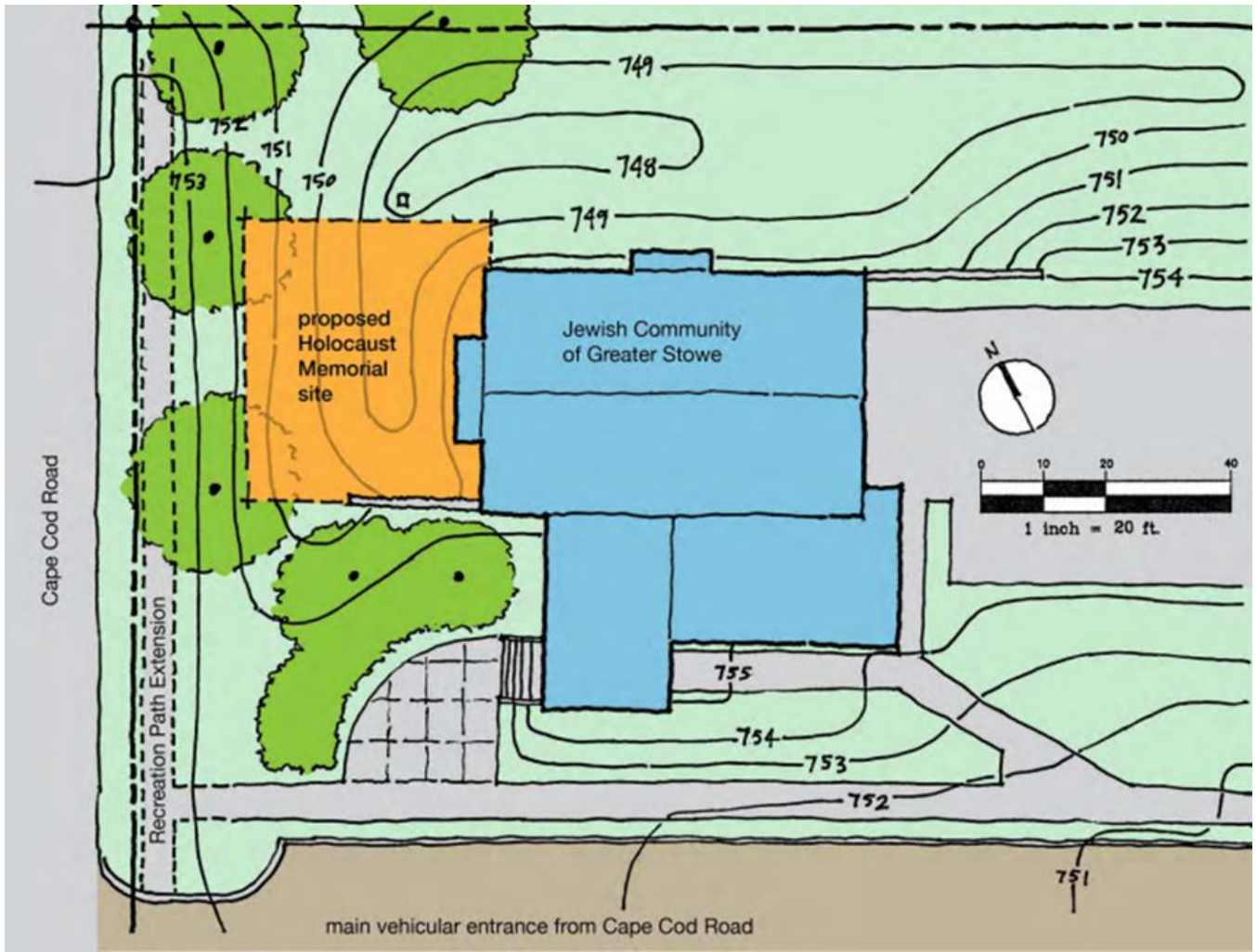
[NY Times: Children of the Holocaust who are anonymous no more.](#)

Appendix:

1. Aerial photo of site and vicinity.
2. Site Plan at 1:20 with proposed location noted.
3. Existing approach to the site.
4. The site viewed from the JCOGS main entrance plaza.
5. Looking east toward the site as if from the Recreation Path extension.
6. The site (near), looking northeast.
7. View toward the site from Cape Cod Road
8. The site, looking south.
9. The site, looking southwest.
10. Original site drawing with contours.



1. Aerial photo of site and vicinity.



2. Site Plan at 1:20 with proposed location noted.



3. Existing approach to the site.



4. The site viewed from the JCOGS main entrance plaza.



5. Looking east toward the site as if from the Recreation Path extension.



6. The site (near), looking northeast.



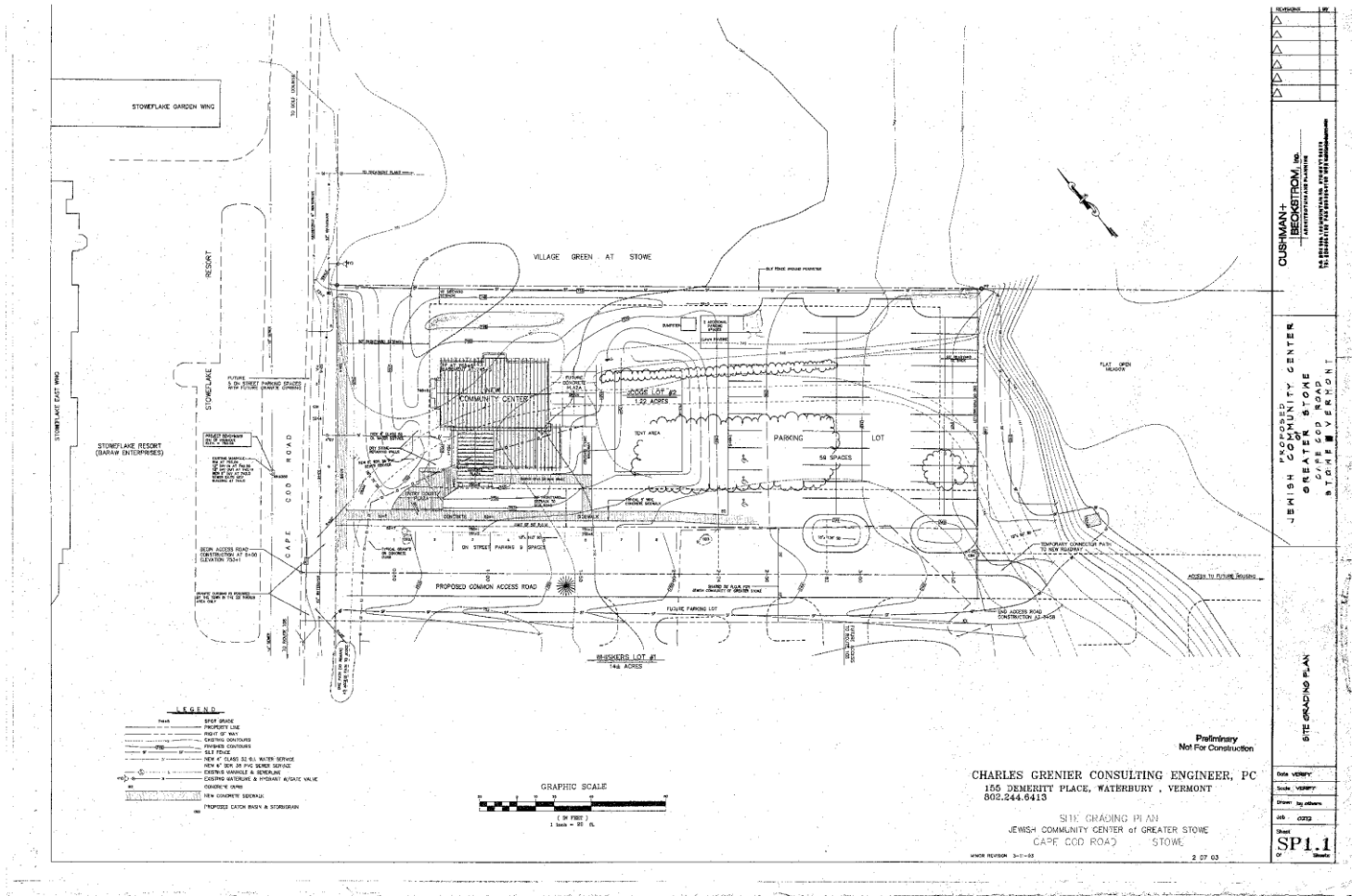
7. View toward the site from Cape Cod Road.



8. The site, looking south.



9. The site, looking southwest.



10. Original site drawing with contours.

The Vermont Holocaust Memorial is a registered 501(c)(3) nonprofit organization.

Vermont Holocaust Memorial, Inc.
 P.O. Box 436
 Jeffersonville, VT 05464